

中国认可
国际互认
检测
TESTING
CNAS L4349

Test Report

NO.: NPCKMWPM825495D1

Issued Date: 2021-08-10

Page 1 of 6

Applicant: Shanghai Yifeng New Materials Co.,Ltd.

The following sample(s) was/were submitted and identified on behalf of the client as:

Sample Name: RoHs Flameresistant Wiring Duct

Sample Received Date: 2021-08-03

Testing Period: 2021-08-03 ~ 2021-08-10

Test Requested: RoHS Directive 2011/65/EU & (EU)2015/863 Annex II

- Test Method:
- (1) IEC 62321-5 Edition 1.0:2013 method, Lead Analysis is performed by AAS
 - (2) IEC 62321-5 Edition 1.0:2013 method, Cadmium Analysis is performed by AAS
 - (3) IEC 62321-4 Edition 1.0:2017 method, Mercury Analysis is performed by ICP-OES
 - (4) IEC 62321-7-2 Edition 1.0:2017 method, Hexavalent Chromium Analysis is performed by UV-Vis
 - (5) IEC 62321-6 Edition 1.0:2015 method, PBBs and PBDEs Analysis is performed by GC-MS
 - (6) IEC 62321-8 Edition 1.0:2017 method, Phthalates Analysis is performed by GC-MS

Test Result: Please refer to next page(s)

Approved by:



微信扫一扫，使用小程序



小程序扫一扫，在线验证

Code: pyae2im6

Test Report

NO.: NPCKMWPM825495D1

Issued Date: 2021-08-10

Page 2 of 6

Test Result (Unit: mg/kg)

Test Item	MDL	Test Result	RoHS Limit
Lead (Pb)	1	N.D.	1000
Cadmium (Cd)	1	N.D.	100
Mercury (Hg)	1	N.D.	1000
Hexavalent Chromium (Cr ⁶⁺)	8	N.D.	1000
Sum of PBBs	—	N.D.	1000
Bromobiphenyl	5	N.D.	—
Dibromobiphenyl	5	N.D.	—
Tribromobiphenyl	5	N.D.	—
Tetrabromobiphenyl	5	N.D.	—
Pentabromobiphenyl	5	N.D.	—
Hexabromobiphenyl	5	N.D.	—
Heptabromobiphenyl	5	N.D.	—
Octabromobiphenyl	5	N.D.	—
Nonabromobiphenyl	5	N.D.	—
Decabromobiphenyl	5	N.D.	—
Sum of PBDEs	—	N.D.	1000
Bromodiphenyl ether	5	N.D.	—
Dibromodiphenyl ether	5	N.D.	—
Tribromodiphenyl ether	5	N.D.	—
Tetrabromodiphenyl ether	5	N.D.	—
Pentabromodiphenyl ether	5	N.D.	—
Hexabromodiphenyl ether	5	N.D.	—
Heptabromodiphenyl ether	5	N.D.	—
Octabromodiphenyl ether	5	N.D.	—
Nonabromodiphenyl ether	5	N.D.	—
Decabromodiphenyl ether	5	N.D.	—

Test Item	CAS Number	MDL	Test Result	RoHS Limit
DEHP	117-81-7	30	N.D.	1000
DBP	84-74-2	30	N.D.	1000
BBP	85-68-7	30	N.D.	1000
DIBP	84-69-5	30	N.D.	1000

Test Report

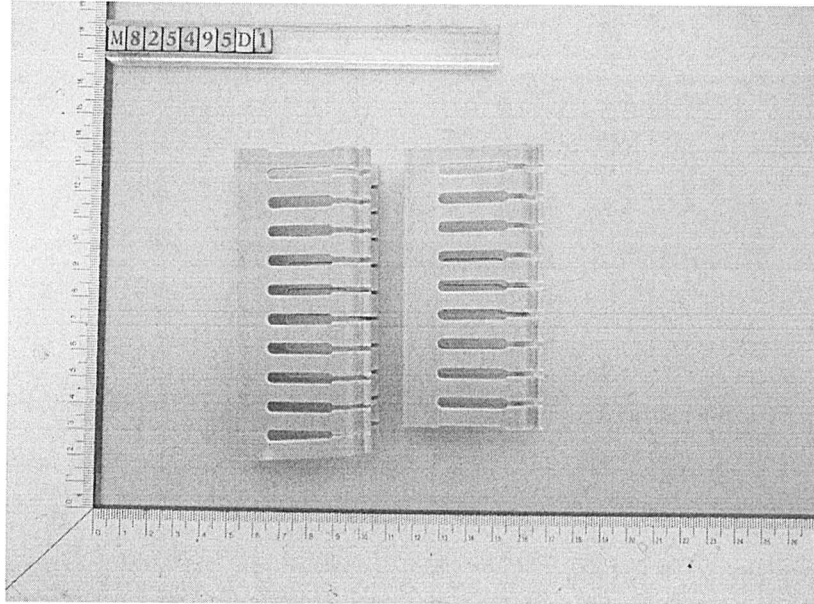
NO.: NPCKMWPM825495D1

Issued Date: 2021-08-10

Page 3 of 6

- Note:
- (1) mg/kg = ppm
 - (2) “—” = Does not stipulate
 - (3) N.D. = Not Detected (<MDL)
 - (4) MDL = Method Detection Limit
 - (5) The most allowable limit value reference to RoHS Directive 2011/65/EU & (EU)2015/863 Annex II

Sample No. &Photo:



Pony authenticate the photo on original report only
The page below is blank

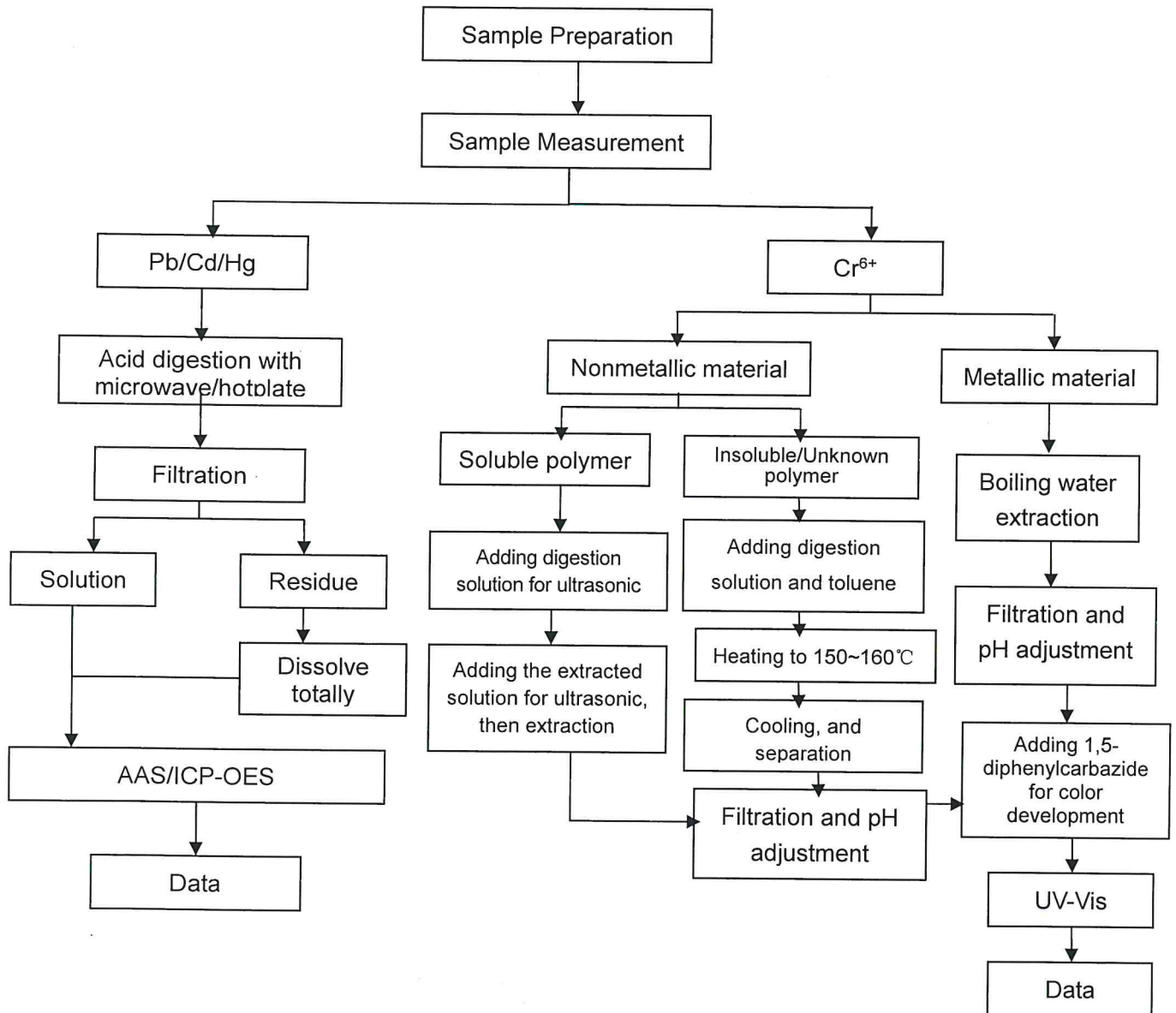
Measurement Flow-chart

Tested by: Luo Congwu

Checked by: Ren Baoguo *Ren Baoguo*

Person in charge of the lab: Zhang Yanhong

These Samples Were Dissolved Totally By Pre-conditioning Method According To Below Flow Chart.
(Cr⁶⁺ Test Method Excluded)



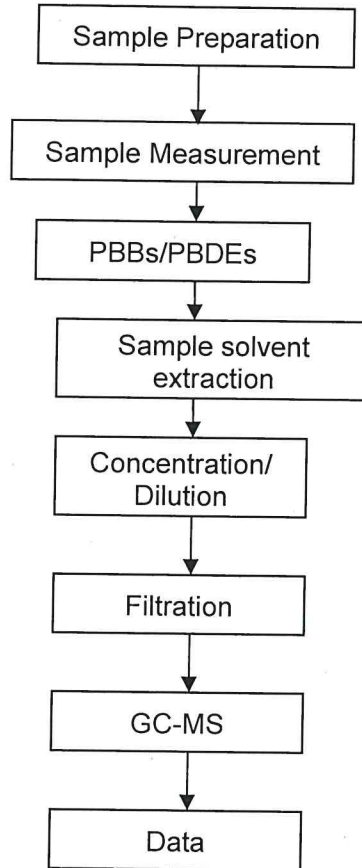
Measurement Flow-chart

Tested by: Sun Yaowu

Checked by: Ren Baoguo

Ren Baoguo

Person in charge of the lab: Zhang Yanhong

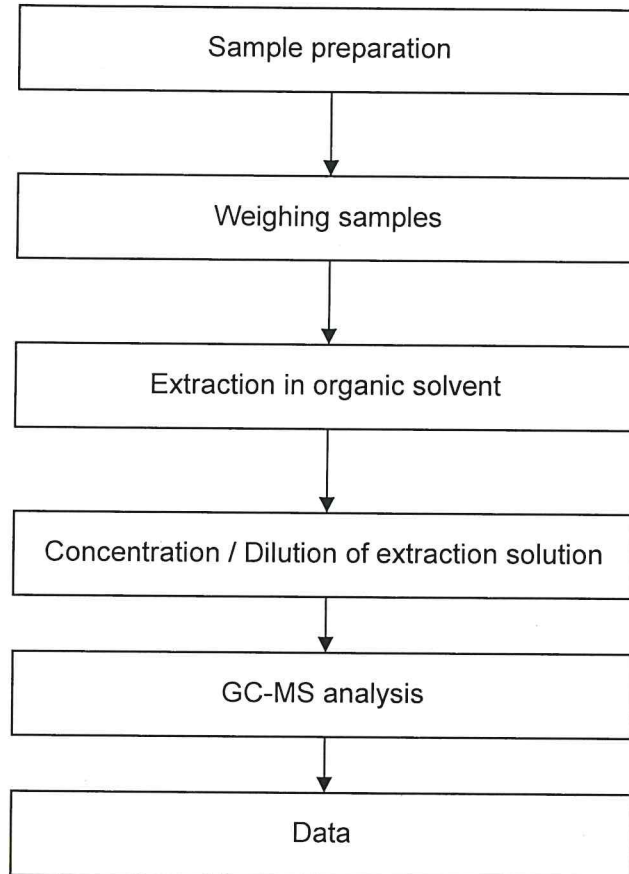


Phthalates Measurement Flow-chart

Tested by: Sun Yaowu

Checked by: Ren Baoguo *Ren Baoguo*

Person in charge of the lab: Zhang Yanhong



End of Report

